



Premier 2-Bedroom Cottage

Quaint and clean, perfect for your escape to the island.

With an open-plan kitchen/lounge, fully-equipped kitchen, shower room, and double decking with patio table and parasol, a 2-Bedroom Cottage is a wonderful choice for a second holiday home in this delightful Seaview setting.

Situated minutes from the numerous stunning surrounding beaches, with picturesque views of the Hersey Nature Reserve, the location really holds an exclusive magnificence. With just a short stroll from our site, you can easily reach the renowned Seaview Yacht Club, village shops, restaurants and bars.

Accommodation: The 2-Bedroom Cottage is a very well presented attached bungalow, recently refurbished in 2015 to a luxurious, modern standard. With tasteful, full furnishings, it is “ready to move into,” and an absolutely ideal “lock up & leave” holiday home.

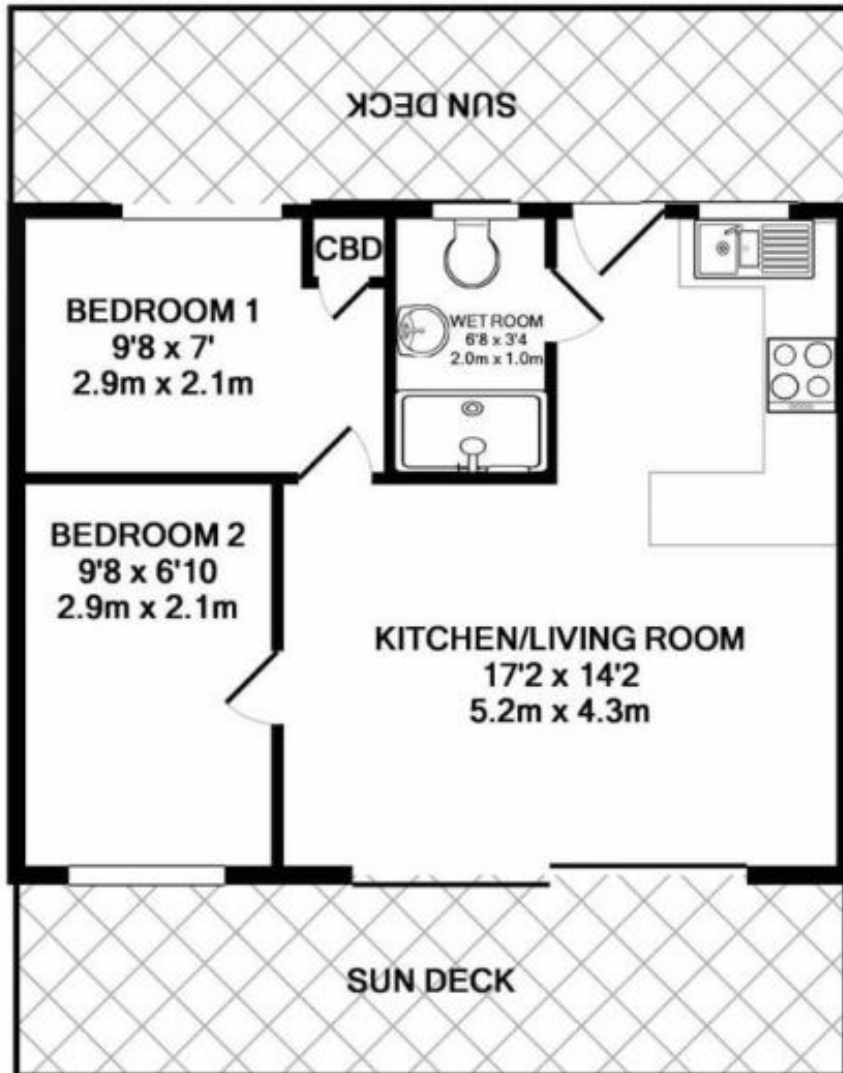
Benefits include modern electric heating, double glazed doors and windows, large private decked area, and lush, green views of the surrounding rolling hills.

External: Private sun deck, perfect for alfresco dining and relaxing.

This house is being sold fully furnished, is offered chain free, and is a free hold property.

Salterns Village is set within superb grounds with large lawned areas, backing onto the Nature Reserve and Pond: the natural habitat of many species of birds, particularly ducks, geese, and swans.





TOTAL APPROX. FLOOR AREA 377 SQ.FT. (35.0 SQ.M.)

Whilst every attempt has been made to ensure the accuracy of the floor plan contained here, measurements of doors, windows, rooms and any other items are approximate and no responsibility is taken for any error, omission, or mis-statement. This plan is for illustrative purposes only and should be used as such by any prospective purchaser. The services, systems and appliances shown have not been tested and no guarantee as to their operability or efficiency can be given

Made with Metropix ©2018

Open-Plan Living Room / Kitchen: - (5.33m max x 4.32m max) / (17'6 max x 14'2 max)

Bedroom 1: - 2.87m x 2.06m (9'5 x 6'9)

Bedroom 2: - 2.95m x 2.13m (9'8 x 7'0)

Shower/WC: - 2.13m x 1.02m (7'0 x 3'4)